

CONVERT LEGACY IE ASSETS



Original Software



J MCDUGALL

MAY 2021

BERTIE 2

TABLE OF CONTENTS

Table of Contents	2
INTERNET EXPLORER ASSETS.....	3
Chromium Project	3
TestDrive Chromium Technology.....	3
Converting IE assets to Chromium assets	3
Test and Resync	6
Running Test and Tesync.....	6
Adding or changing an Action.....	7
Move an Action to a new Item.	7
Right Click Menu	8
Replacing and saving changes	9



INTERNET EXPLORER ASSETS

Microsoft's support for the Internet Explorer browser stopped on the 11th November 2020, Microsoft 365 products will end support for Internet Explorer on August 17th 2021.

As Internet Explorer has been the preferred browser of institutions, a lot of automation assets will have been produced against that technology. As TestDrive is configured against individual technologies, IE scripts and playlists are not able to be used against other browsers. This document describes the process of utilizing the new TestDrive Chromium technology to allow the continued use of your IE automation assets.

CHROMIUM PROJECT

The Chromium project is an open-source project that included its browser. Microsoft Edge has adopted the Chromium technology meaning that the Edge browsers Parsing engine is the same as most popular browsers.

TESTDRIVE CHROMIUM TECHNOLOGY

From the Bertie 2 release we have introduced Chromium technology, this allows a default configuration (Option set) to be used with any application run on a Chromium browser with minimal configuration changes.

This technology works quicker when playing back automation having to analyse less on the screen. As we utilize the Chromium technology it means the scripts and playlists with an application change will work across multiple browsers.

CONVERTING IE ASSETS TO CHROMIUM ASSETS

To convert your IE automation assets to Chromium automation assets you will need to have Bertie 2 or later installed. You will need the 'Chromium-Conversion Test' option set, this is available directly from Original Software support or your technical account manager.

If you are unfamiliar with the Test and Resync functionality, please read the Test and Resynch section of this document.

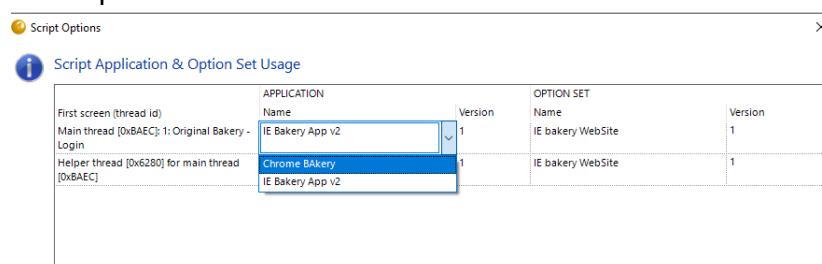
This process has been tested, however there will be situations where manual editing of the scripts will be required. Initially you may want to try 'Continue Playback' in between the updated screens. However, if you experience issues where a mouse click or property is not found, attempt the conversation using single step through.

1. Import the Option set 'Chromium- Conversion Test'
2. Ensure the Original Software Chromium Plugin has been installed within Chrome
3. Copy the current Application, change the Command to attach to chrome.exe from explorer.exe.
4. Change the Option set from the original to the supplied 'Chromium- Conversion Test'
5. Export the playlist: Right Mouse click on the playlist and select 'Export'. We can use this should we have problems converting any scripts we will then be able to load the original.

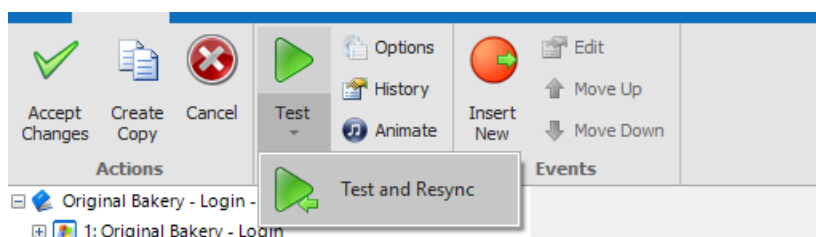
6. Take details of any 'Get From Screen' node, as we will be replacing the analysis these will need re configuring against the new screens and objects.
7. Open the Playlist you wish to convert, edit the original IE script.
8. Select the 'Options from the top menu bar



From the Script Options Window change the Application to your newly created application. You should see the Option Set change to the 'Chromium -Conversion Test' option set.

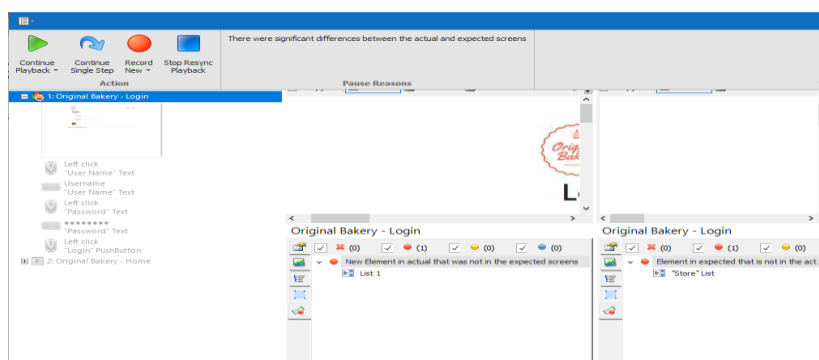


9. With the Chrome open and the application ready, select 'Test' then 'Test and Resynch' from the top menu.



This will launch the TestDrive sidebar, the script will playback and stop when the Test and Resync detects a change in the first screen.

The Test and Resynch screen will be launched, as there are significant differences between the IE analysis and the new Chrome analysis the process will stop and allow you to decide how to progress.



10. To progress you can Select to continue Playback or Continue step by step.

11. Once completed the Resynch Screen will allow you select 'Replace', this will update all screens and inputs.
12. To save the changes you should select 'Save' at within the screen editor and 'Save' within the Playlist editor.



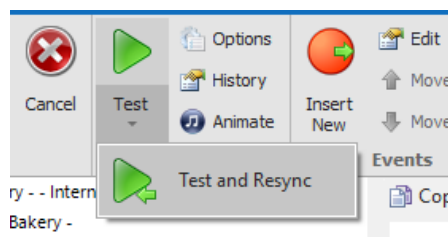
TEST AND RESYNC

The Test and Resynch functionality, is designed to correct scripts after an application has changed. For example, if a new version of your application was released with a changed script, and this had different controls on the screen we can update the scripts.

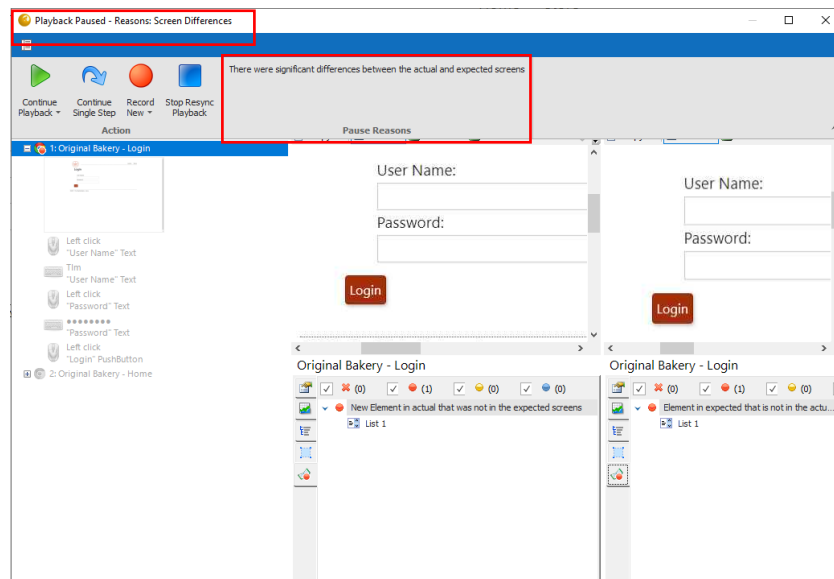
As the conversion from IE to Chrome utilizes this functionality, we will include it within this document.

Running Test and Tesync

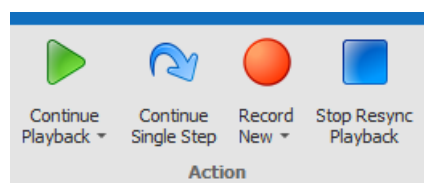
Test and Resynch is launched from the script itself, from the script editor you can access Test and Resynch by selecting the Drop Down on the Test Button.



Selecting Test and Resynch will launch the TestDrive sidebar and connect to the application and start comparing the current captured screen with the original in the Script. If there are differences the playback will pause, the reason will be shown on the screen.



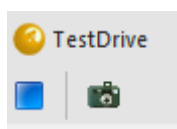
Here you are able to progress through the script or continue one action at a time.



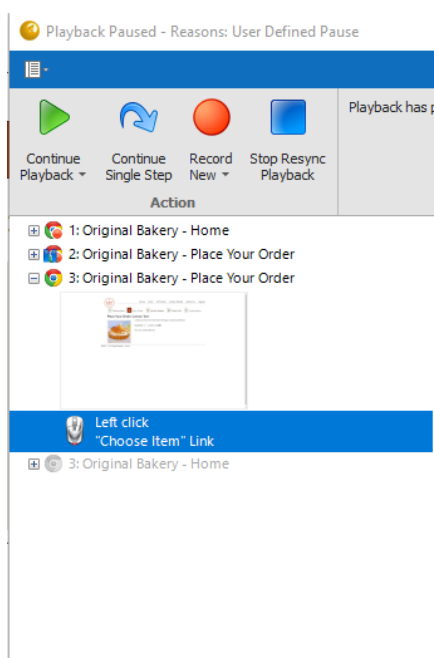
Adding or changing an Action

If you wish to add a new action, for example if there was a new field to populate, you will need to progress through the script to the point you wish to add the new action. The simplest way to achieve this is to progress through the script using 'Single Step', at the point you wish to add a new action select 'Record New Script'.

This will launch the TestDrive sidebar and allow you to record the new actions, once you have finished select the stop recording button.



This will then insert your new recording into the script. You should plan for the remainder of the script to be able to continue, so if the next actions rely being on a specific screen that should be part of your new recording.

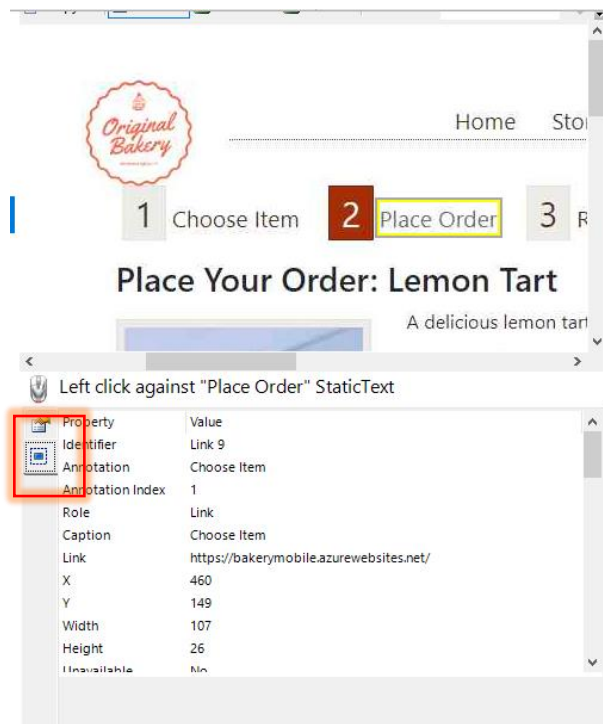


Move an Action to a new Item.

You can edit the script as you are progressing through Test and Resynch, it may be that the new screens and analysis differ. This could lead to a situation where a mouse click or keyboard entry needs property changing.

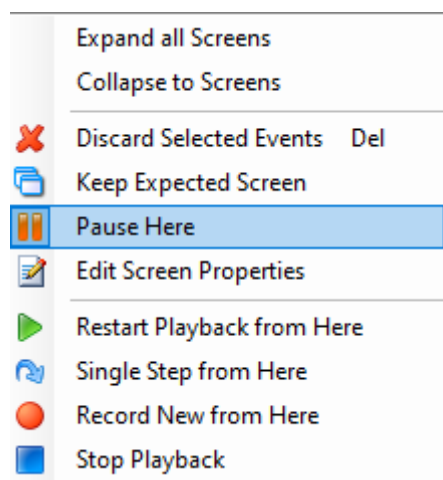
In this example the annotation has changed and would need to correct it.

By selecting the Blue Square on the Property of the mouse click I can drag and drop this to the desired location.

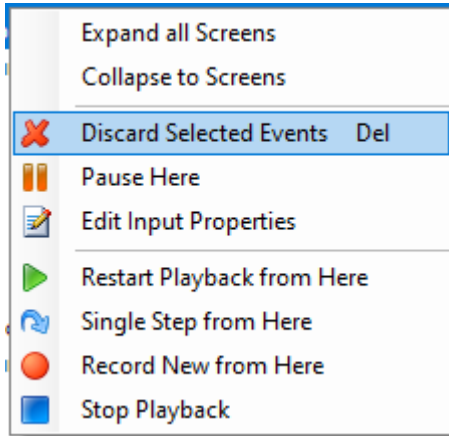


Right Click Menu

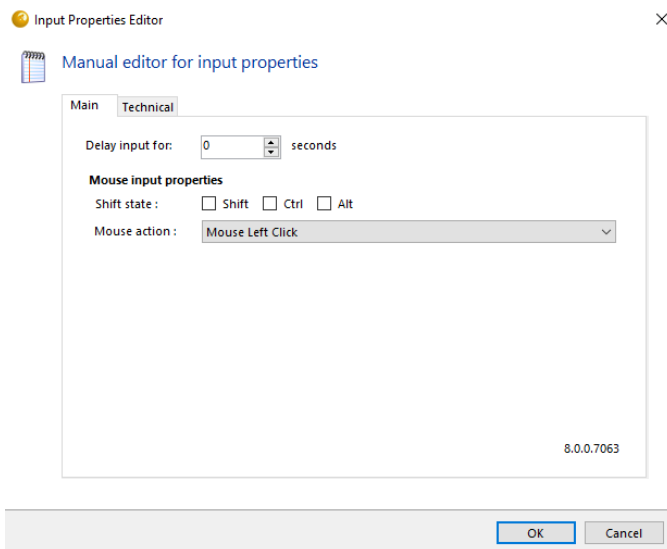
By Right Clicking on a Screen you get access to a further menu, here you are able to decided to keep or discard the new screen and analysis



We can also access the menu and edit an input.

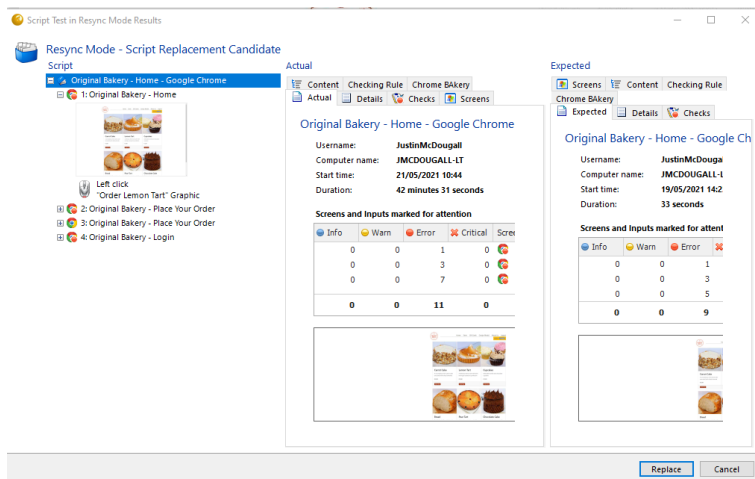


By selecting the 'Edit Input Properties' menu we can access and edit the input directly, this of course also be complete in the script editor once the tool has run.



Replacing and saving changes

Once the Test and Synch Process has completed, the Script Replacement screen will be displayed. This gives you the option to review any changed before they are mad to the script.



Selecting 'Replace' will replace the script with the new actions and screens, at this point testing the script before saving this back to the database allows you to confirm the script is working. At this point not saving the scrip/Playlist means you are still able to reload and perform the actions again.

This is not permanent until the changed script has been saved back to the database.