

CREATING UNATTENDED PLAYLIST



Original Software



T. DILLON

NOVEMBER 2021

BERTIE 4

TABLE OF CONTENTS

Table of Contents	2
Synopsis	3
Schedule Playback.....	4
Creating batch file	4
Examining Batch File.....	5
Task Scheduler Options.....	5



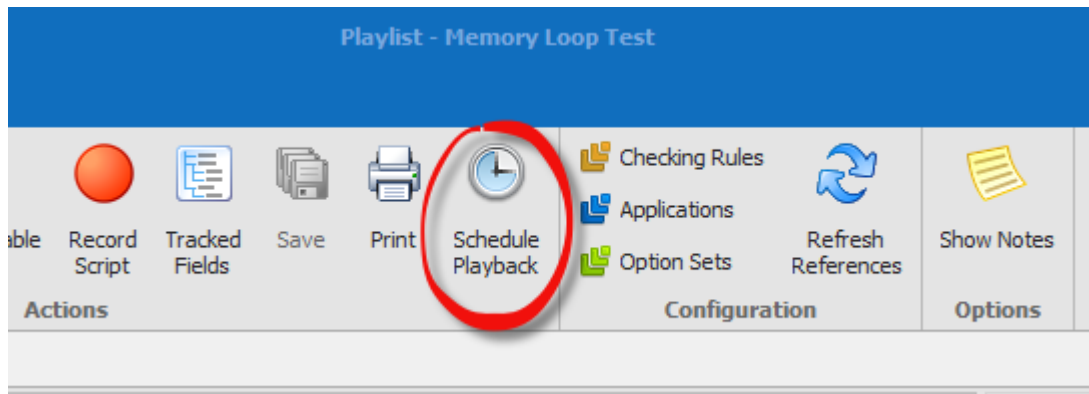
SYNOPSIS

Once you have reached a point where the automation playlist you created can now be ran without your assistance, you can then leverage the TestDrive feature "Schedule Playback". This will allow you to create a .bat file that will typically be triggered from the Task Scheduler within the Windows OS.

SCHEDULE PLAYBACK

CREATING BATCH FILE

While you have your desired playlist open, navigate to the top middle of the ribbon bar in the playlist editor and select "Schedule Playback".



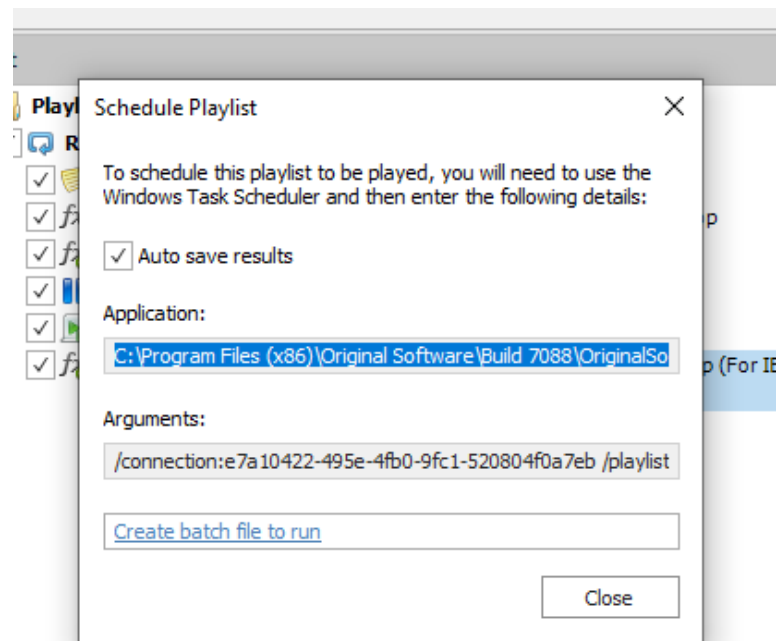
You will receive a dialog box that provides some useful information about creating an unattended playback. Below are 2 methods

1st method:

- You create a scheduled task with the Application and Arguments parameters given within the dialog itself.

2nd method:

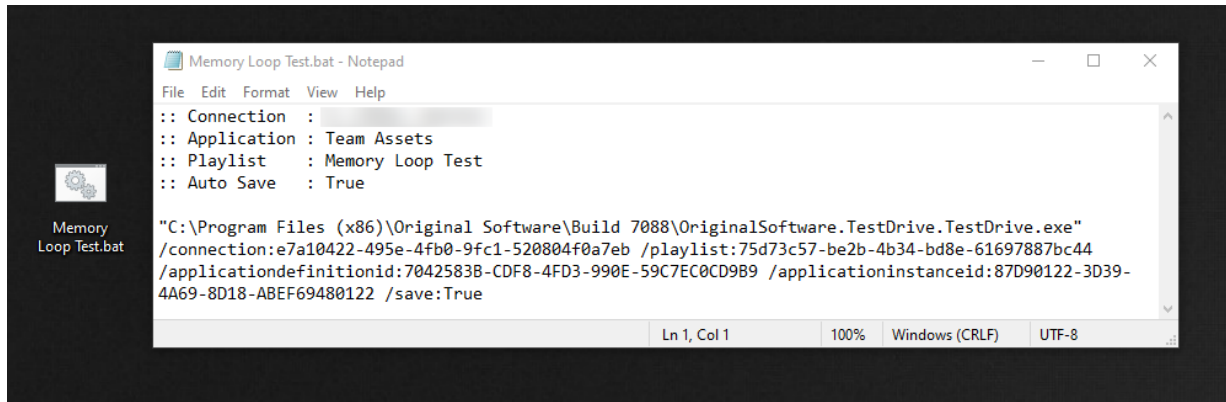
- You generate a .bat file by selecting "create batch file to run". This will allow you place the file in a desired location for 1 machine or many machines to call from.



*Do not unselect the "Auto save results" option unless you have a playlist that is purely driving data into a system and is using another form output for a set of results.

EXAMINING BATCH FILE

Looking at the created batch file further, you see the provided top commented area that specifies what connection, application, playlist the file is referencing. Below the commented area is where the magic happens to open and run the playlist automatically. You do have the option to manually run the .bat file as the task scheduler is not required (But recommended) for playback on the batch file.



```
Memory Loop Test.bat - Notepad
File Edit Format View Help
:: Connection : 
:: Application : Team Assets
:: Playlist : Memory Loop Test
:: Auto Save : True

"C:\Program Files (x86)\Original Software\Build 7088\OriginalSoftware.TestDrive.TestDrive.exe"
/connection:e7a10422-495e-4fb0-9fc1-520804f0a7eb /playlist:75d73c57-be2b-4b34-bd8e-61697887bc44
/applicationdefinitionid:7042583B-CDF8-4FD3-990E-59C7EC0CD9B9 /applicationinstanceid:87D90122-3D39-
4A69-8D18-ABEF69480122 /save:True

Ln 1, Col 1 100% Windows (CRLF) UTF-8
```

TASK SCHEDULER OPTIONS

This area is typically dependent on the process of your organization and what restrictions are on the machines used to trigger the unattended playlist. Take look at the link below as this will help provide some insight for creating a scheduled task properly for the .bat files and provide assistance on keeping the windows machine(s) awake at the time of the unattended playlist run

- https://origsoft.com/pauple_helpie/enabling-locked-or-inactive-remote-windows-machines/